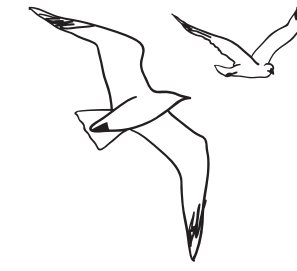


Queen of Salmakis



SALMAKIS
YACHT



Queen of Salmakis

40 meters new brand wooden Sailing yacht Queen of Salmakis is a luxury modern designed gulet. Queen of Salmakis is fully equipped for Sailing with her 2 masts and available for welcoming up to 18 guests in her stylish beautifully designed 8 cabins, which are consist of 2 master, 4 double and 2 triple cabins (one double+one single bed) by offering a superior accomadation to her crowded special groups both in Turkey and Greece.

Half-wooden-semi-sybaria sued combination is applied in her cabin design and unlike other usual gulet designs; all bathrooms are built with the same size, dimensions.

Queen of Salmakis has Turkish Loyd classification and has top quality amenities and affords modern facilities with remarkable space on board by also having a deck jacuzzi. All the deck areas with living areas kept wide and spacious by focussing on our guests' pleasure and comfort.

In the luxury gulet class , Queen of Salmakis is providing a high quality luxury service and can honour crowded VIP groups on board with more than 12 people by her 18 pax capacity for Greece and Turkey charter programmes.







Saloon

















Toys

Windsurf, canoe, wakeboard, paddleboard,
snorkelling & fishing equipment, ringo, waterskil, 1 x jetski





Specifications

Length: 40m

Beam: 8.50m

Draught: 3.37m

Built: 2019

Builder : Salmakis Yachting

Number of crew: 7 (seven)

Accommodation: Available for 18 guests in 8 cabins

(2 master, 4 double cabins, 2 triple cabins with double and single bed)

Based Port: Bodrum

Hull Construction: Laminated wooden

Bow Thruster: Hydraulic bow thruster

Equipments on board: Full sailing equipment GPS, Radar, VHF, Navtex, Sart, Epirb, Ais, Depth Sounder

Full regulation safety equipments LED Tvs **IN THE** Saloon and All cabins

JL-Audio Marin Sound System Wi-fi connection,

Boston Sound player cinema system in the saloon, Playstation, DVD player

Flag: Turkish

Classifications and Notition: Turkish Loyd. with class notation of "+1A5 K20 Woode Passenger Vessel+M

Engines: 2 x Volvo Penta D13, 600 kw

Generators: 2 x Onan, 40kw

Cruising Speed: 10 Knots

Maximum Speed: 12 Knots

Diesel Oil Tank: 6.800 lt

Fresh Water Tank: 4.200 lt

Black Water Tank: 4.400 lt

Watermaker: 1 x 600 lt

Tenders: 1 speed boat with 115 HP engine 1 crew boat with 20 HP engine

Toys: Windsurf, canoe, wakeboard, paddleboard, snorkelling & fishing equipment, ringo, waterskil, 1 x jetski



Queen of Salmakis





SALMAKIS
YACHT